



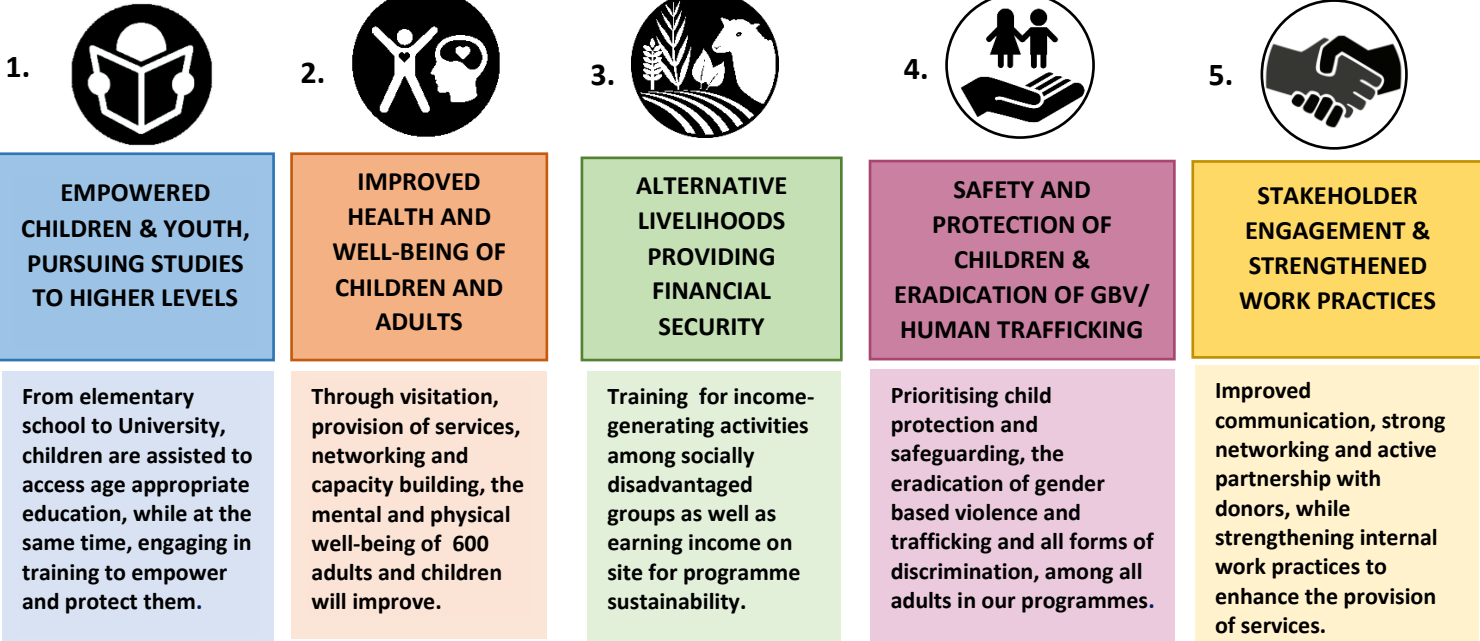
GOOD SHEPHERD SISTERS NONG KHAI FOUNDATION

From participant's dependency to greater self-reliance ...2022 -2027

IMPACT

Impoverished women, children and vulnerable adults, families and communities, affected by illness, domestic violence, disability, homelessness and unemployment, will be empowered to access their rights, help themselves and live with dignity.

OUTCOMES



KEY OUTPUTS – PER YEAR

- 400-500 students assisted to pursue their education.
- 700 children and youth receive training on life skills/online media/preventing human trafficking/family violence/values of life/ethics/ and the environment, while creating a 50 strong leadership group.
- 400 families reduce family financial burdens through participation in Savings Groups
- 600 adults and children benefit from home visits by project staff for evaluation, referral, home care, and education of caregivers
- Regular nutrition promotion visits for 40 children annually (birth to 3 years) and 20 children with chronic illness/disability, to monitor development
- Care and rehabilitation, of 70 patients per year, who are convalescent in Garden of Friendship
- Development of 120 strong PLWHA local network
- Provide training facilities and services in the Sufficiency Learning Centre, for 700 – 1,000 users per year, from government agencies, the private sector and civil society.
- Generate organizational income from agricultural activities - animal husbandry, mushroom cultivation, organic vegetable production - on site in Sufficiency Learning Centre, Garden of Friendship and Friendship Cnetre
- 370 people provided opportunities to develop methods for sustainable organic agriculture, animal husbandry, food security and additional income-generating activities as well as budget management
- 50 leaders/year, trained on domestic violence, relevant laws and good reporting protocol, in order to build a surveillance center in their community.
- 30 people trained to become family support volunteers to promote positive family relationships and child protection.
- 1,000 participants in community event, enhancing awareness and strengthening community-level surveillance to prevent violence against children and women.
- Strengthening and developing staff potential and organisation's best practices through knowledge input, data base development and skills development.
- Increased collaboration with local network partners and both domestic and international donors.

CENTRAL TO FACILITATING CHANGE, ARE OUR CORE VALUES

